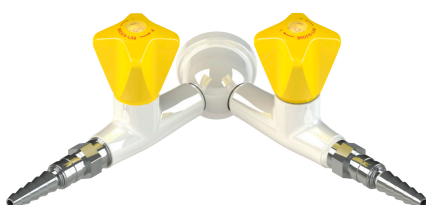


DOUBLE WALL FITTINGS WITH STRAIGHT VALVES

With fixed nozzle



With quick release coupling



SPECIFICATIONS

Handle: Polypropylene with media indication according to EN13792

Hose nozzle: Metal, fixed

Headwork: Ceramic, press/turn

Opening/closing function: 90°

Max. working pressure: 7 bar / 102 psi

Allowable test pressure after installation:
10 bar without function of the valve

MATERIALS WITH MEDIA CONTACT

Metals: Brass, NBR (rubber hose)

Sealing: Nitrile (NBR)

Lubricant: Mineral oil based

Ceramics: Al₂O₃ 96%

ORDERING INFORMATION

For standard configuration please refer to the item numbers below.

Other options:

- different media
- flashback arrestor
- needle or 1/4-turn headwork
- alternative hose type and inlet connection
- other inlet options (type, length)
- national approvals

Models

Media



Natural gas



Liquefied petroleum gas

with fixed nozzle

2532 054 1031-52B

2532 054 1032-52B

with quick release coupling

2532 055 1031-52B

2532 055 1032-52B

Fittings are delivered with a 700mm rubber hose with OD10mm inlet connection.

For other options please refer to page 19 or contact your local BROEN-LAB representative.